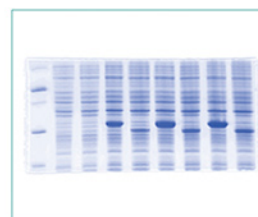


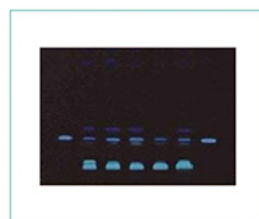
## Integrated Automatic Gel Imaging System



DNA gel imaging



PAGE gel imaging



Thin layer chromatography



Colony count

### Applications:

Nucleic acid detection with various fluorescent dyes such as EB, SYBR Gold, SYBR Green, SYBR Safe, Gel red Gel, Green Texas Red, Fluorescein labeled DNA/RNA, etc.

### Features:

- \* Camera lens, adopt dark field camera module F 1.0 Super aperture 20 million Solutions Analyticity.
- \* Touch system 12.5 inches touch HD display, one touch imaging, intelligent processing system.
- \* Special filter, multilayer coated filter is adopted passing of absolute stray light.

### Technical Parameters:

Model	BK-AGX3
Camera Resolution	6.0MP
Photosensitive Efficiency	≥79%
Exposure Time	1ms-5000ms
Pixel Density	16 Bits (0-65535)
OD	≥4.8OD
Lens	Large aperture autofocus lens F=1:1.2, 20 million auto focus lens
UV Transmission	302nm, optional other transmitted blue light
White Light Reflection	LED reflection (cold light)
White Light Transmission	White light conversion sample board
Filter	Standard 590nm, other optional
Shooting Area	21×21cm
Timer Shut Down	1-60min
Touch System	12.5-inch touch system
Power Supply	110-240V, 50/60Hz
Packing Size	450*462*666mm
Gross Weight	22.3kg